

# WATER RESOURCES SUMMARY

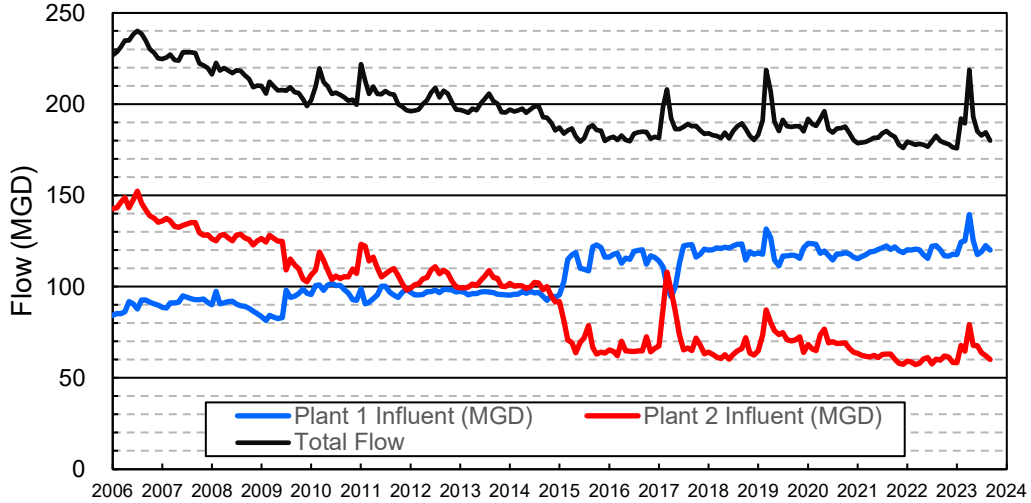
August 2023

| INFLOWS & OUTFLOWS<br>(acre-feet)  | Total for<br>Month | Year to Date -<br>This Year    Last Year |          |
|--|--------------------|--|----------|
| <b>BASIN SUPPLIES</b>  |                    |  |          |
| Water Purchases from MWD (excludes In Lieu)                                      | 0                  | 0  | 0        |
| Water into MWD Storage Account (excludes In Lieu)                                | 0                  | 0  | 0        |
| SAR & Santiago Creek Flows<br>(accounts for storage to/from recharge facilities) | 13,376             | 25,904                                   | 8,914    |
| GWRS Water to Forebay  | 6,710              | 14,829                                   | 10,650   |
| GWRS Water to Mid-Basin Injection Wells  | 522                | 1,191                                    | 1,367    |
| GWRS Water to Talbert Barrier  | 1,563              | 3,301                                    | 4,510    |
| OC-44 and F. Valley Water to Talbert Barrier                                     | 3                  | 3  | 0        |
| Alamitos Barrier Water   | 201                | 404                                      | 496      |
| Incidental Recharge (estimated)  | 1,200              | 2,400                                    | 2,300    |
| Evaporation from Recharge Basins   | (483)              | (914)                                    | (485)    |
| River Flow Lost to Ocean   | <u>(359)</u>       | <u>(359)</u>                             | <u>0</u> |
| Total Groundwater Recharge   | 22,734             | 46,760                                   | 27,752   |
| <b>WATER PRODUCTION</b>  |                    |  |          |
| Groundwater Production   | 26,329             | 55,032                                   | 47,752   |
| MWD Storage Program Withdrawals  | <u>0</u>           | <u>0</u>                                 | <u>0</u> |
| Total Groundwater Production   | 26,329             | 55,032                                   | 47,752   |
| <b>BASIN BALANCE</b>   |                    |  |          |
| Change in Groundwater Storage  | (3,595)            | (8,272)                                  | (20,000) |
| Change in Groundwater Storage excluding MWD Stored Water                         | (3,595)            | (8,272)                                  | (20,000) |
| Accumulated Overdraft  | -----              | 196,275                                  | 278,003  |
| Accumulated Overdraft excluding MWD Storage                                      | -----              | 196,275                                  | 278,003  |
| <b>IN LIEU WATER</b>   |                    |  |          |
| OCWD In Lieu Purchases (MWD Cyclic Storage)                                      | 0                  | 0  | 0        |
| MWD In Lieu Storage  | <u>0</u>           | <u>0</u>                                 | <u>0</u> |
| Total In Lieu  | 0                  | 0  | 0        |
| <b>OTHER KEY INFORMATION</b>   |                    |  |          |
| 1. MWD Water Deliveries to Producers   | 6,802              | 13,866                                   | 23,063   |
| 2. Basin Production Percentage   | 79.5%              | 79.9%                                    | 67.4%    |
| 3. Total Water Demand  | 35,065             | 72,802                                   | 74,514   |
| 4. Total GWRS Production   | 8,803              | 19,340                                   | 16,547   |
| 5. Green Acres Project Water   | 409                | 843                                      | 1,007    |
| 6. SAR Water Quality   |                    |  |          |
| - Total Dissolved Solids (TDS) of SAR below Prado Dam (ppm)                      | 324                | -----                                    | 742      |
| - Total Nitrogen of SAR below Prado Dam (ppm)                                    | 0.4                | -----                                    | 2.6      |
| 7. Month-End Water Storage Behind Prado Dam                                      | 5,578              | -----                                    | 0        |
| 8. Month-End Water Storage in Recharge Facilities                                | 18,776             | -----                                    | 8,226    |
| 9. Water Storage Change in Recharge Facilities                                   | 3,543              | (2,474)                                  | (2,650)  |
| 10. Total Artificial Recharge  | 21,534             | 44,360                                   | 25,452   |
| 11. Monthly Mean Temperature at Santa Ana Fire Station (°F)                      | 76.5               | -----                                    | 77.7     |
| 12. Rainfall at FHQ (inches)   | 2.59               | 2.59                                     | 0.00     |

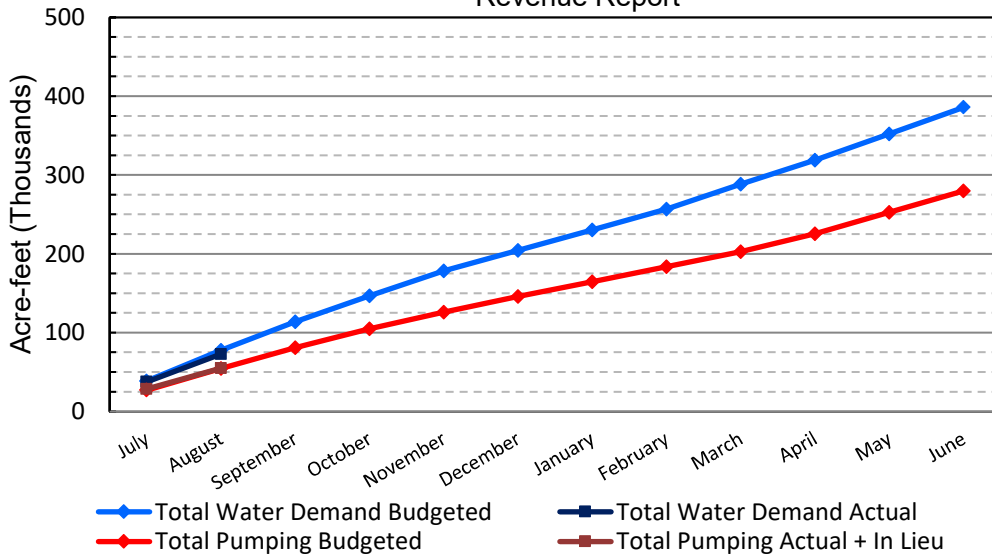
\*\*\* Note: Data are preliminary, subject to change

9/14/2023

### Orange County Sanitation District Influent Flows Report

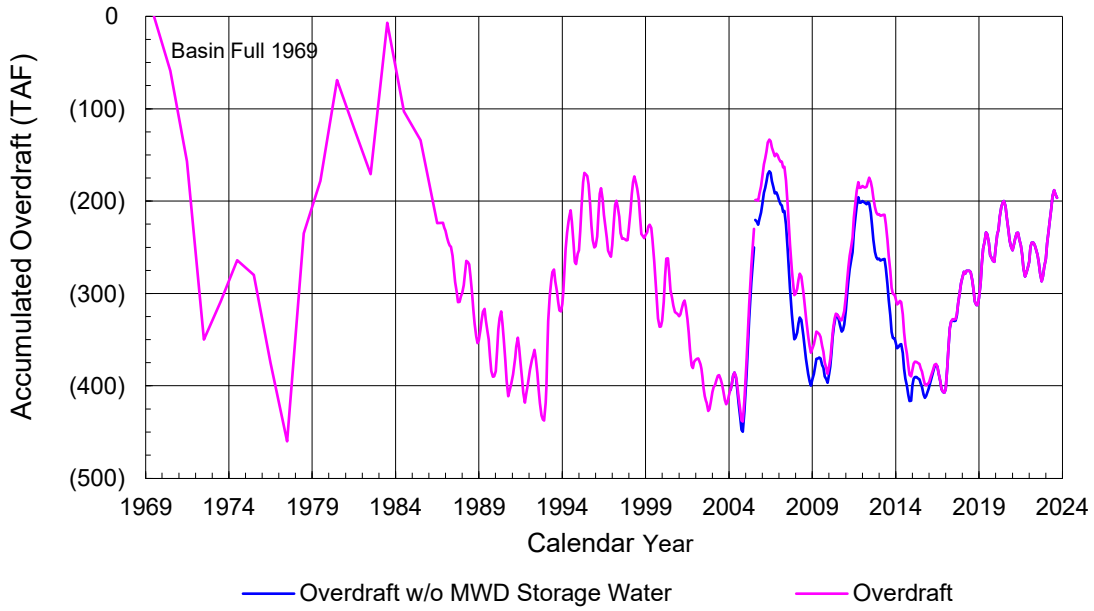


### 2022-23 Water Demands/Groundwater Pumping + In Lieu/RA Revenue Report

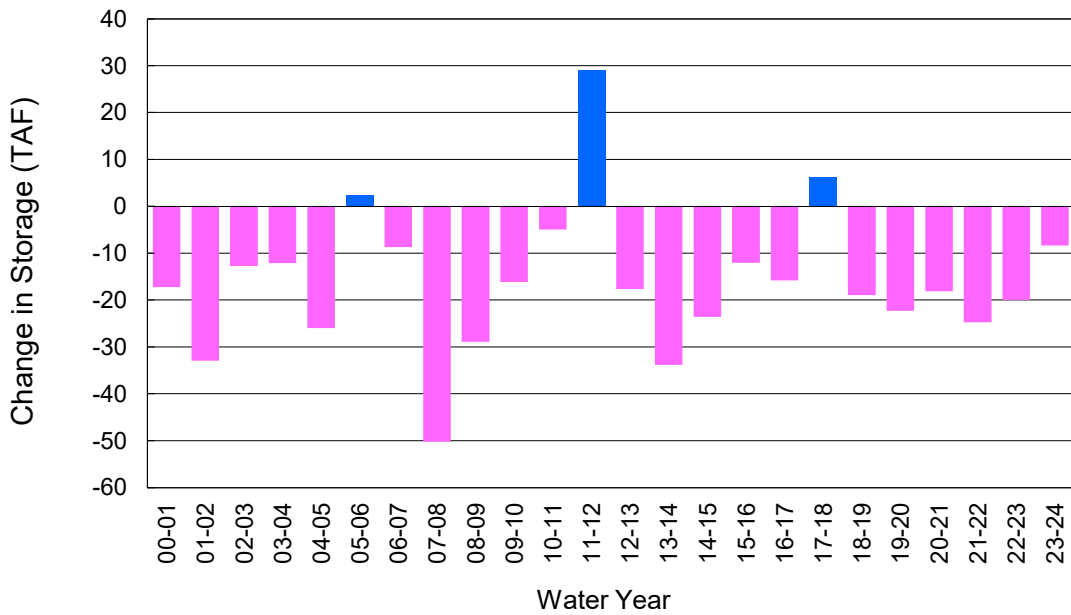


|                         | Monthly      |              | Accumulated Total for the Year |              |            |         |
|-------------------------|--------------|--------------|--------------------------------|--------------|------------|---------|
|                         | Budget       | Actual       | Budget                         | Actual       | Difference | Percent |
| Total Water Demand      | 38,900       | 35,065       | 77,600                         | 72,802       | -4,798     | 93.82%  |
| Total Pumping + In Lieu | 27,200       | 26,329       | 54,400                         | 55,032       | 632        | 101.16% |
| RA Revenue              | \$12,566,400 | \$12,163,807 | \$25,132,800                   | \$25,424,875 | \$292,075  | 101.16% |

### Accumulated Overdraft



### YTD Change in Groundwater Storage in OCWD



## PRODUCERS WATER USAGE SUMMARY

**August 2023**

(AF except BPP)

| WATER AGENCY                             | Ground-water (1) | In Lieu  | Reclaimed Water | Total Import (2) | Total Demand  | 2023-24 YTD Demand | 2022-23 YTD Demand | YTD % Diff Demand | AUG 2023 BPP | 2023-24 YTD BPP | 2022-23 YTD BPP |
|--|------------------|----------|-----------------|------------------|---------------|--------------------|--------------------|-------------------|--------------|-----------------|-----------------|
| Anaheim                                  | 2,464            | 0        | 0               | 2,696            | 5,161         | 10,446             | 10,759             | 97%               | 47.8%        | 50.2%           | 27.9%           |
| Buena Park                               | 1,038            | 0        | 0               | 206              | 1,245         | 2,550              | 2,599              | 98%               | 83.4%        | 83.2%           | 81.9%           |
| East Orange County                       | 0                | 0        | 0               | 85               | 85            | 168                | 172                | 98%               | 0.4%         | 0.4%            | 0.2%            |
| Fountain Valley                          | 799              | 0        | 88              | 0                | 887           | 1,845              | 1,979              | 93%               | 100.0%       | 100.0%          | 100.0%          |
| Fullerton                                | 1,529            | 0        | 0               | 574              | 2,103         | 5,265              | 4,680              | 113%              | 72.7%        | 75.4%           | 75.3%           |
| Garden Grove                             | 1,954            | 0        | 0               | 0                | 1,954         | 4,000              | 4,160              | 96%               | 100.0%       | 100.0%          | 62.2%           |
| Golden State                             | 1,207            | 0        | 0               | 857              | 2,064         | 4,241              | 4,328              | 98%               | 58.5%        | 56.0%           | 62.6%           |
| West OC System                           | 898              | -        | -               | 351              | 1,249         | 2,546              | 2,583              | 99%               | na           | na              | na              |
| East OC System                           | 310              | -        | -               | 506              | 816           | 1,695              | 1,745              | 97%               | na           | na              | na              |
| Huntington Beach                         | 1,974            | 0        | 0               | 332              | 2,306         | 4,726              | 4,897              | 97%               | 85.6%        | 83.3%           | 57.4%           |
| Irvine Ranch                             | 3,980            | 0        | 1,683           | 20               | 5,683         | 11,720             | 11,544             | 102%              | 99.5%        | 99.6%           | 99.3%           |
| DRWF Clear                               | 2,597            | -        | -               | -                | 2,597         | 5,573              | 5,423              | 103%              | na           | na              | na              |
| DRWF Color                               | 718              | -        | -               | -                | 718           | 1,441              | 1,447              | 100%              | na           | na              | na              |
| Laguna Beach                             | 0                | 0        | 0               | 298              | 298           | 618                | 660                | na                | 0.0%         | 0.0%            | 0.0%            |
| La Palma                                 | 166              | 0        | 0               | 0                | 166           | 334                | 340                | 98%               | 100.0%       | 100.0%          | 99.0%           |
| Mesa Water (MW)                          | 1,481            | 0        | 92              | 0                | 1,573         | 3,196              | 3,330              | 96%               | 100.0%       | 100.0%          | 100.0%          |
| MW Clear                                 | 1,095            | -        | -               | -                | 1,095         | 2,528              | 1,966              | 129%              | na           | na              | na              |
| MW Amber                                 | 386              | -        | -               | -                | 386           | 476                | 1,108              | 43%               | na           | na              | na              |
| Newport Beach                            | 1,088            | 0        | 50              | 230              | 1,368         | 2,699              | 3,066              | 88%               | 82.5%        | 90.5%           | 89.5%           |
| Orange                                   | 1,871            | 0        | 0               | 469              | 2,340         | 4,958              | 5,051              | 98%               | 79.9%        | 78.2%           | 51.0%           |
| OCWD (GAP)                               | 196              | 0        | 0               | 0                | 196           | 425                | 281                | 151%              | 100.0%       | 100.0%          | 100.0%          |
| Santa Ana                                | 2,689            | 0        | 22              | 256              | 2,966         | 5,993              | 6,156              | 97%               | 91.3%        | 91.4%           | 63.9%           |
| Seal Beach                               | 284              | 0        | 0               | 1                | 285           | 583                | 584                | 100%              | 99.7%        | 99.7%           | 0.1%            |
| Serrano                                  | 191              | 0        | 0               | 120              | 311           | 596                | 574                | 104%              | 61.4%        | 69.9%           | 89.3%           |
| Tustin                                   | 640              | 0        | 0               | 339              | 979           | 1,991              | 2,098              | 95%               | 65.4%        | 61.2%           | 47.8%           |
| Westminster                              | 938              | 0        | 0               | 0                | 938           | 1,911              | 1,930              | 99%               | 100.0%       | 100.0%          | 100.0%          |
| Yorba Linda                              | <u>1,529</u>     | <u>0</u> | <u>0</u>        | <u>309</u>       | <u>1,839</u>  | <u>3,872</u>       | <u>4,085</u>       | <u>95%</u>        | <u>83.2%</u> | <u>83.1%</u>    | <u>81.1%</u>    |
| SUBTOTAL:                                | 26,019           | 0        | 1,935           | 6,793            | 34,747        | 72,138             | 73,273             | 98%               | 79.5%        | 79.9%           | 67.4%           |
| Other Producers<br>(Est ~3% of Subtotal) | <u>309</u>       | <u>0</u> | <u>0</u>        | <u>9</u>         | <u>318</u>    | <u>665</u>         | <u>1,241</u>       | <u>54%</u>        |              |                 |                 |
| <b>TOTAL:</b>                            | <b>26,329</b>    | <b>0</b> | <b>1,935</b>    | <b>6,802</b>     | <b>35,065</b> | <b>72,802</b>      | <b>74,514</b>      |                   | <b>79.5%</b> | <b>79.9%</b>    | <b>67.4%</b>    |
| OCWD (Talbert Barrier)                   | 0                |          | 1,563           | 0                | 1,563         | 3,304              | 4,510              |                   |              |                 |                 |
| OCSA (GAP)                               | na               |          | 157             | na               | 157           | 265                | 155                |                   |              |                 |                 |

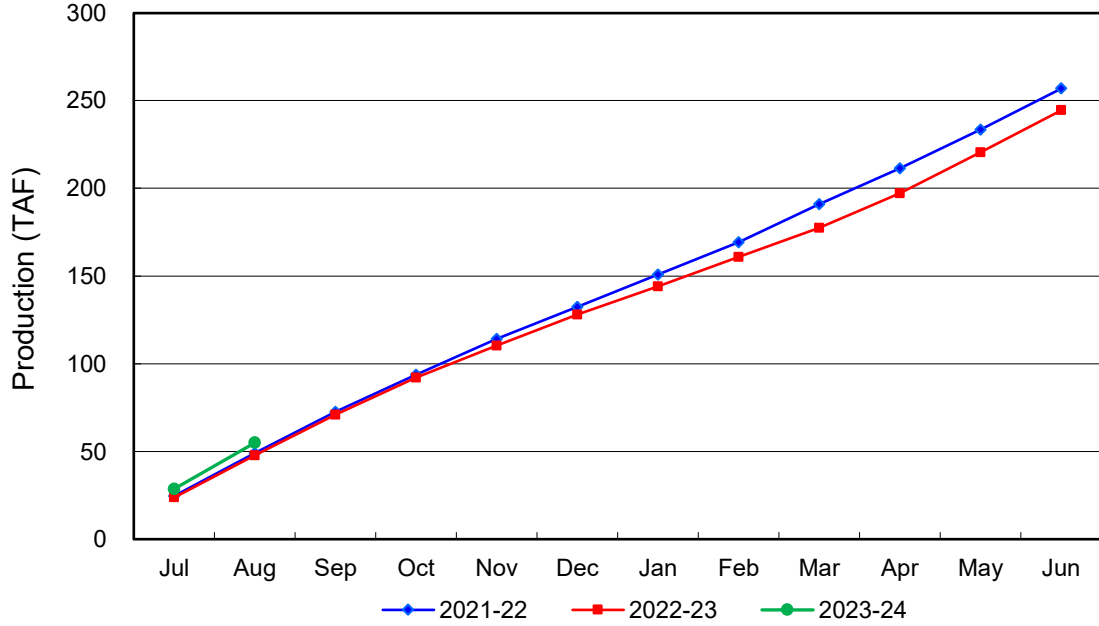
Estimated

(1) Excludes MWD CUP Withdrawals

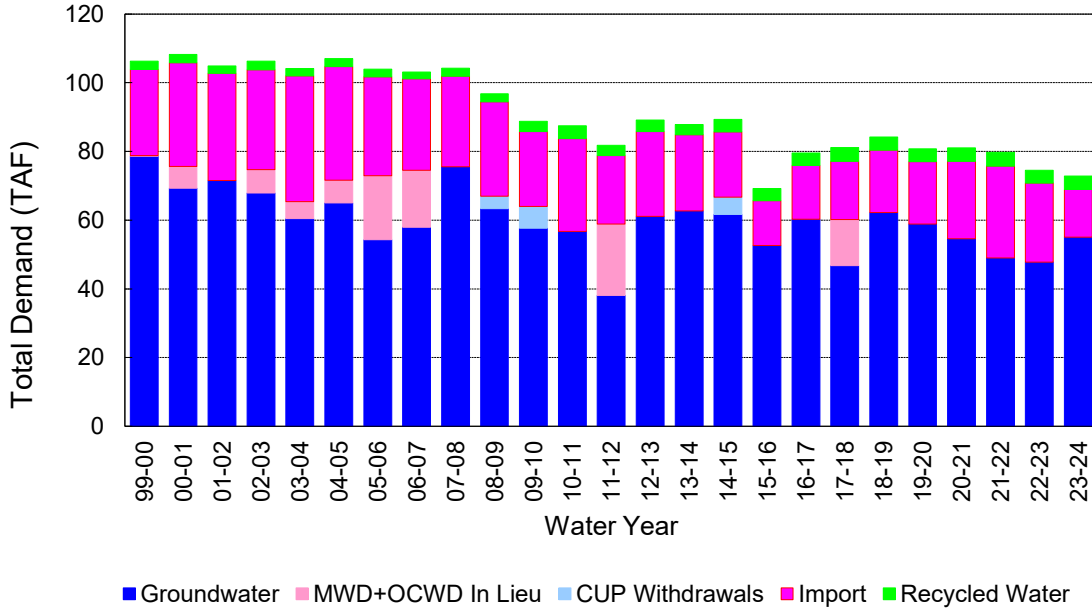
(2) Includes MWD CUP Withdrawals & In Lieu Water

9/14/2023 16:23

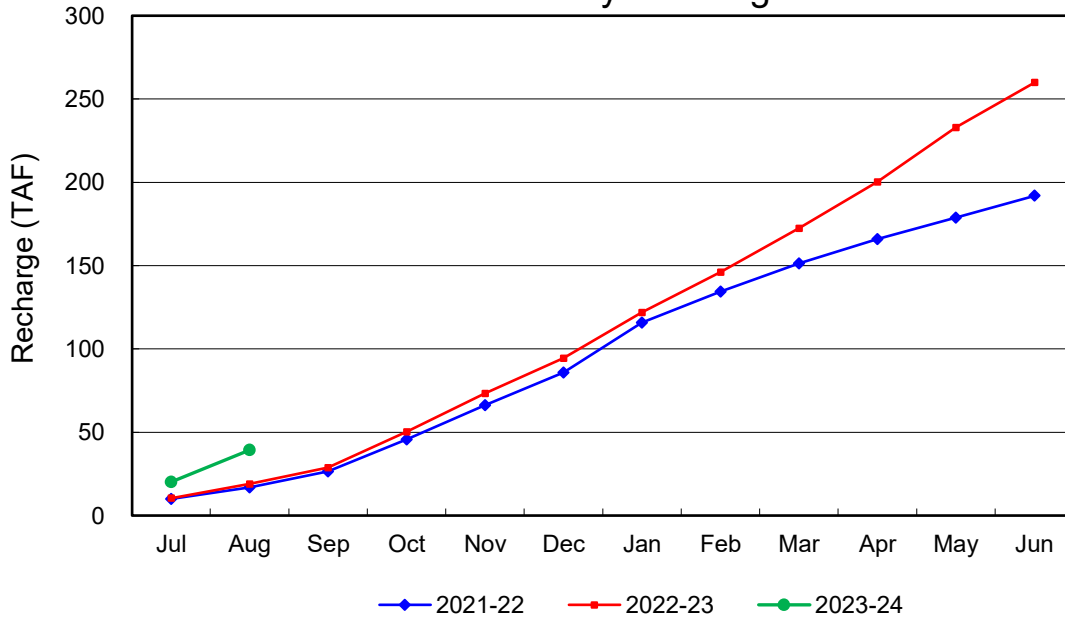
### Annual Groundwater Production



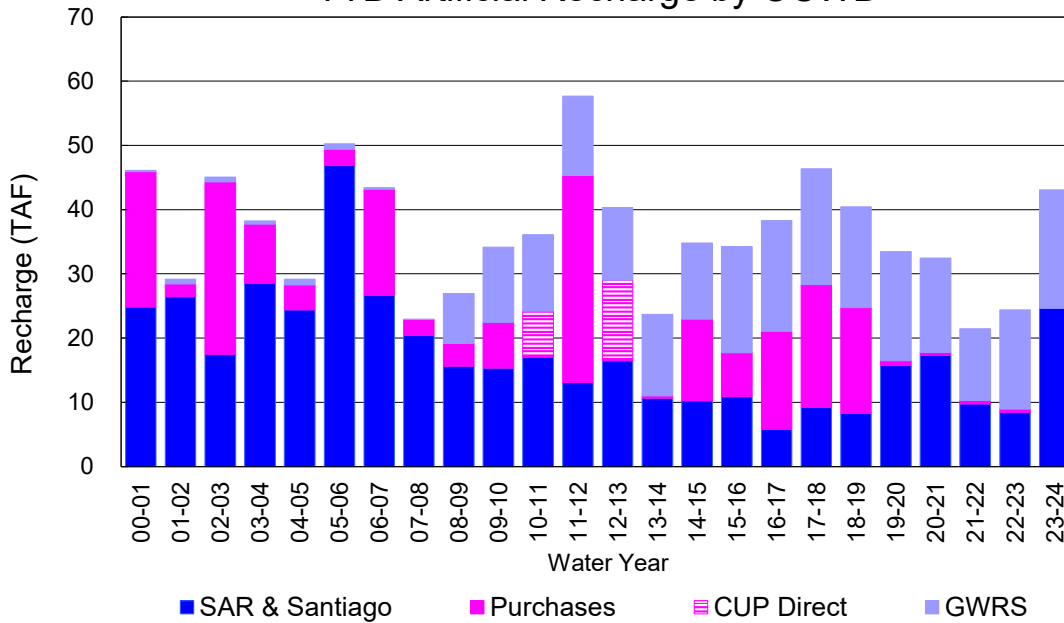
### YTD Total Demand in OCWD



### Annual Forebay Recharge



### YTD Artificial Recharge by OCWD



## RECHARGE AREAS REPORT

August 2023

|                     | Percolation (AF) | Remarks                           |
|---------------------|------------------|-----------------------------------|
| RIVER SYSTEM        | 4,716            | 77 cfs per day average perc       |
| DESILTING SYSTEM    | na               | SAR                               |
| OFF-RIVER SYSTEM    | 1,938            | SAR                               |
| WARNER SYSTEM       | 229              | SAR                               |
| OLIVE BASIN         | na               | Passive System                    |
| ANAHEIM LAKE        | 1,184            | SAR                               |
| MINI-ANA LAKE       | 189              | SAR                               |
| MILLER BASIN        | 1,132            | GWRS                              |
| KRAEMER BASIN       | 49               | SAR                               |
| LA PALMA BASIN      | 4,287            | GWRS                              |
| MIRA LOMA           | 1,302            | GWRS                              |
| LA JOLLA BASIN      | 355              | SAR                               |
| PLACENTIA BASIN     | na               |                                   |
| RAYMOND BASIN       | 167              | SAR                               |
| FIVE COVES BASIN    | na               | SAR                               |
| BURRIS BASIN        | 824              | SAR                               |
| RIVER VIEW BASIN    | 156              | SAR, Burris Pumping               |
| FLETCHER BASIN      | 45               | SAR, Burris Pumping, local runoff |
| SANTIAGO BASINS     | 2,489            | SAR, Burris Pumping, local runoff |
| SANTIAGO CREEK      | 183              | SAR, Burris Pumping, local runoff |
| <b>TOTALS</b>       | <b>19,245</b>    |                                   |
| <b>5-YR AVERAGE</b> | <b>11,719</b>    |                                   |

| FLOWS TO RECHARGE AREAS (AF)              |               |
|---|---------------|
| Imperial Headgates (estimated)            | 15,634        |
| GWRS                                      | 6,710         |
| OC-28 (MWD)                               | 0             |
| OC-28a (MWD)                              | 0             |
| OC-59                                     | 0             |
| Est'd local Forebay inflow below Imperial | 709           |
| Est'd local Santiago inflow (estimated)   | 403           |
| Irvine lake releases (OC-13 MWD)          | 0             |
| Villa Park Dam releases (estimated)       | 0             |
| Precip at Warner Basin (inches)           | 2.59          |
| Precip direct to open water surfaces      | 173           |
| <b>TOTAL INFLOW</b>                       | <b>23,629</b> |

| LOSSES FROM RECHARGE AREAS (AF)  |            |
|----------------------------------|------------|
| Est'd SAR flow past Chapman Ave. | 224        |
| Est'd Santiago Cr. flow to SAR   | 135        |
| Est'd flows past Raymond Basin   | 0          |
| Calc'd evap (inches) Estimated   | 7.21       |
| Est'd evaporative losses         | 483        |
| <b>TOTAL LOSSES</b>              | <b>842</b> |

| STORAGE CHANGES (AF) |               |               |              |
|----------------------|---------------|---------------|--------------|
| Facility             | Begin         | End           | Net          |
| Deep basins          | 6,274         | 8,591         | 2,317        |
| Santiago Pits        | 8,959         | 10,185        | 1,226        |
| River                |               |               |              |
| Off-river            |               |               |              |
| Irvine Lake          |               |               |              |
| <b>TOTAL</b>         | <b>15,233</b> | <b>18,776</b> | <b>3,543</b> |

| SUMMARY (AF)       |        |
|--------------------|--------|
| TOTAL INFLOW       | 23,629 |
| TOTAL LOSSES       | 842    |
| STORAGE CHANGE     | 3,543  |
| CALC'D PERCOLATION | 19,245 |

## DEEP BASINS MONTHLY STATUS

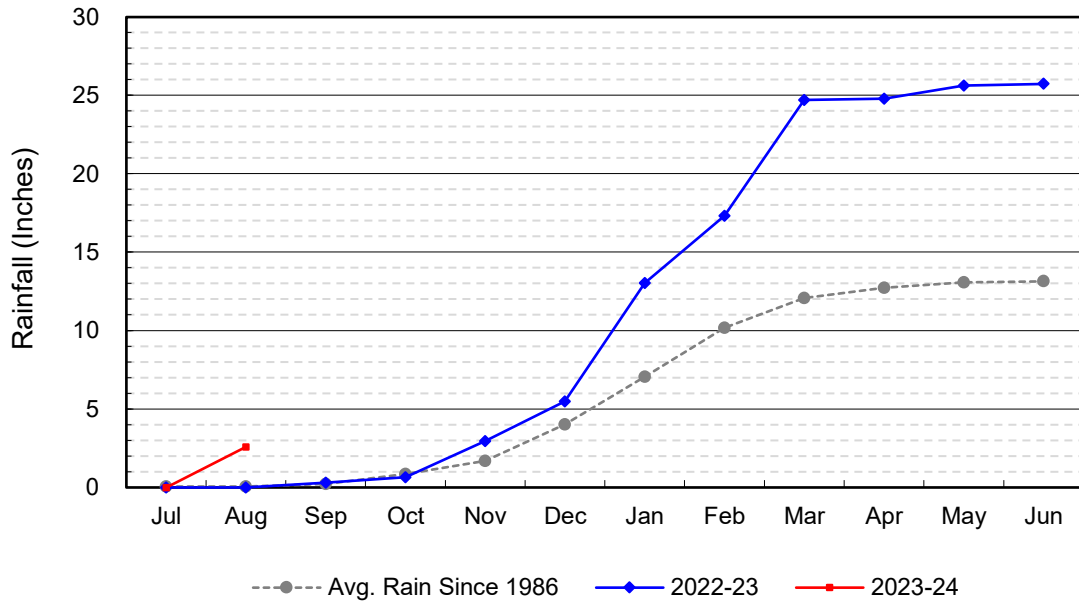
**August 2023**

(values in acre-feet)

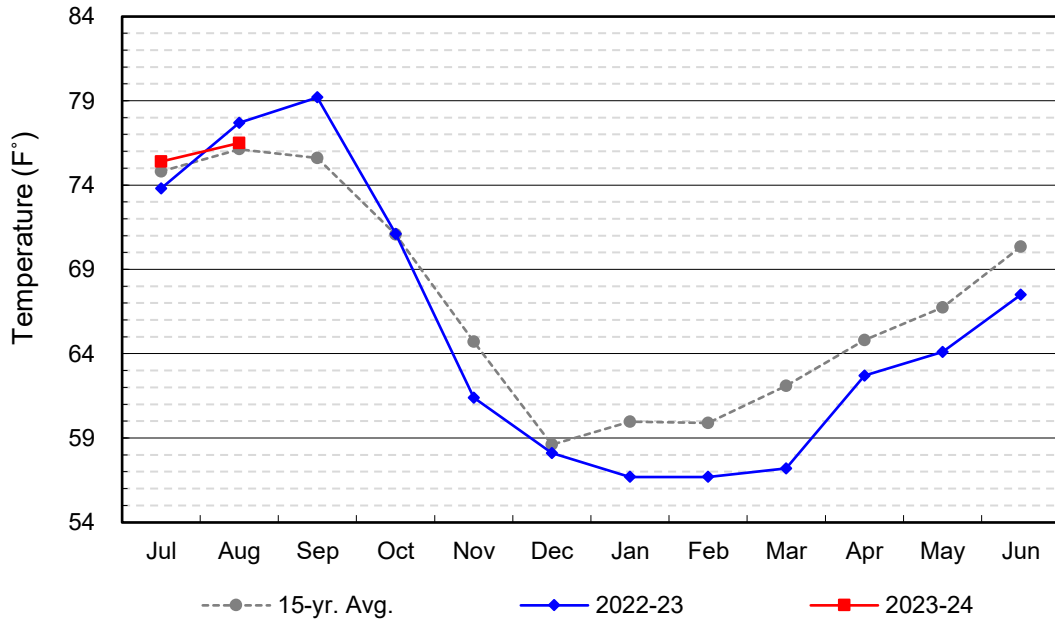
| <i>Facility</i>    | <i>Storage<br/>Start</i> | <i>Storage<br/>End</i> | <i>Maximum<br/>Storage</i> | <i>Total<br/>Perc</i> | <i>Max<br/>Perc</i> | <i>Avg<br/>Perc</i> | <i>Avg W.S.<br/>Elev</i> |
|--------------------|--------------------------|------------------------|----------------------------|-----------------------|---------------------|---------------------|--------------------------|
| Desilting Ponds    | 200                      | 230                    | 252                        | na                    | na                  | na                  | na                       |
| Fos-Huckleberry    | 537                      | 573                    | 628                        | na                    | na                  | na                  | na                       |
| Conrock Basin      | 552                      | 609                    | 661                        | na                    | na                  | na                  | na                       |
| Warner Basins      | 2,902                    | 2,896                  | 2,900                      | 229                   | na                  | na                  | 237                      |
| Olive Pit          | 0                        | 38                     | 95                         | na                    | na                  | na                  | 197                      |
| Anaheim Lake       | 158                      | 1,552                  | 2,300                      | 1,184                 | 145                 | 37                  | 184                      |
| Mini-Anaheim Lk    | 0                        | 8                      | 10                         | 189                   | 32                  | 6                   | 221                      |
| Miller Basin       | 57                       | 3                      | 350                        | 1,132                 | 64                  | 37                  | 204                      |
| Kraemer Basin      | 0                        | 126                    | 1,055                      | 49                    | 49                  | 2                   | 165                      |
| La Palma Basin     | 93                       | 65                     | 101                        | 4,287                 | 175                 | 138                 | 218                      |
| Mira Loma          | 32                       | 30                     | 53                         | 1,302                 | 50                  | 42                  | 217                      |
| La Jolla Basin     | 4                        | 2                      | 20                         | 355                   | 40                  | 11                  | 200                      |
| Placentia Basin    | 0                        | 0                      | 200                        | na                    | na                  | na                  | na                       |
| Raymond Basin      | 5                        | 5                      | 200                        | 167                   | na                  | na                  | na                       |
| Five Coves Basins  | 0                        | 306                    | 329                        | na                    | na                  | na                  | na                       |
| Burriss Pit        | 1,734                    | 2,140                  | 2,500                      | 824                   | 66                  | 27                  | 163                      |
| River View Basin   | 0                        | 3                      | 8                          | 156                   | 17                  | 5                   | 187                      |
| Fletcher Basin     | 0                        | 5                      | 15                         | 45                    | 12                  | 1                   | 185                      |
| Santiago (Bond)    | 5,968                    | 6,652                  | 8,312                      | 2,489                 | 145                 | 80                  | 253                      |
| Santiago (Blu Dia) | 2,991                    | 3,533                  | 5,259                      | -                     | -                   | -                   | -                        |
| <b>Totals</b>      | <b>15,233</b>            | <b>18,776</b>          | <b>25,247</b>              | <b>12,408</b>         |                     |                     |                          |
|                    |                          |                        |                            |                       |                     |                     |                          |
| Prado Dam          | 1                        | 5,578                  | 20,000                     |                       |                     |                     |                          |



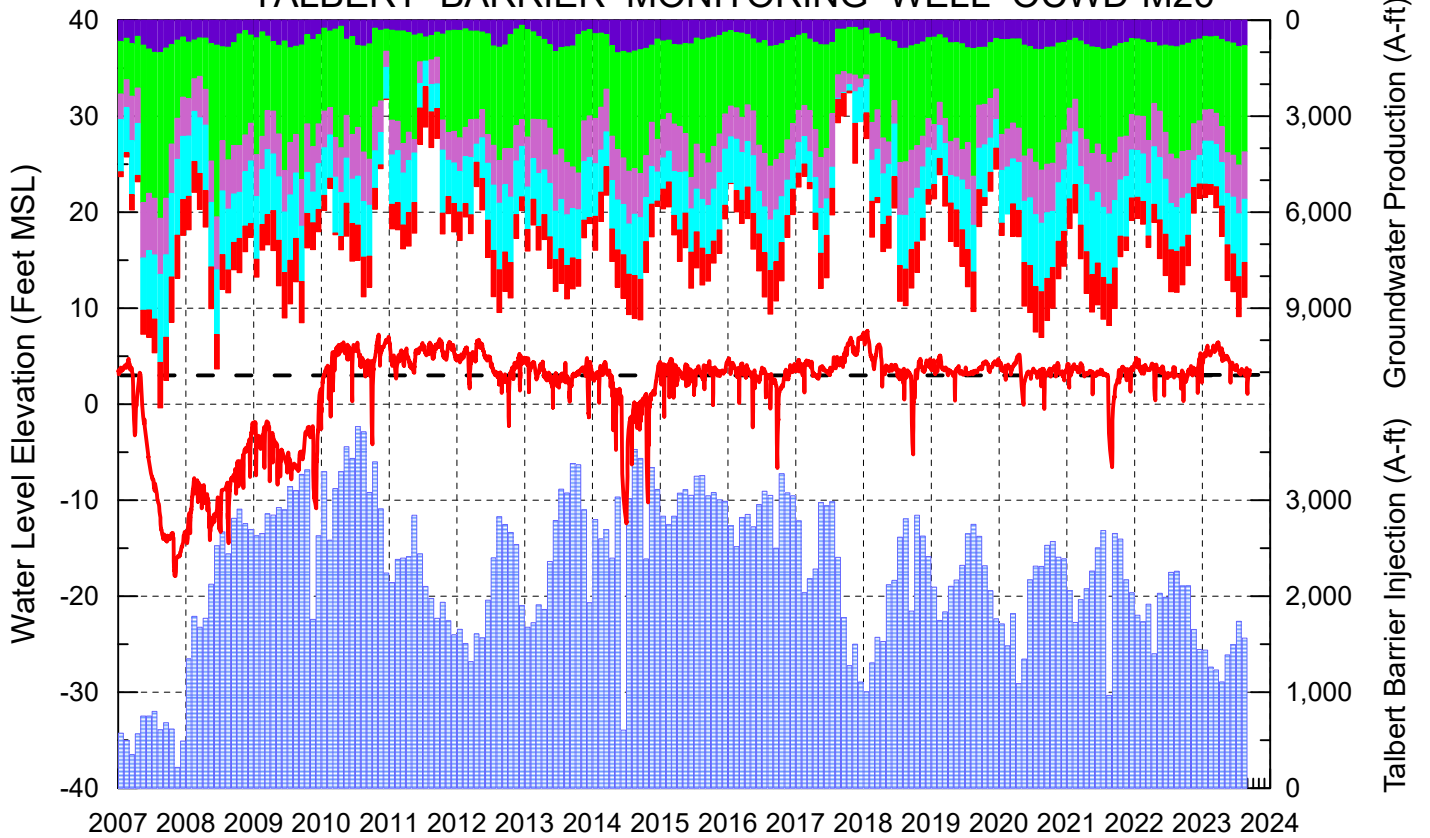
### Cumulative Anaheim Field HQ Rainfall



### Temperature at Santa Ana Fire Station



# TALBERT BARRIER MONITORING WELL OCWD-M26



- Talbert/Lambda Aquifer Mergence Zone Perforated Interval: 71 - 135 ft. bgs
- ▨ Talbert Barrier Injection
- - - Protective Level to Prevent Seawater Intrusion
- ▨ Fountain Valley Groundwater Production
- ▨ IRWD Groundwater Production
- ▨ Mesa Water Groundwater Production
- ▨ Huntington Beach Groundwater Production
- ▨ Newport Beach Groundwater Production

